



jordan fishwick

STOCKPORT
Heritage Gardens



Heritage Gardens, Stockport, SK4 4NU

Guide Price £240,000



The Property

An impressive, two double bedroom, two bathroom, duplex apartment forming part of an attractive period conversion in Heaton Moor, with gated parking and no onward chain.

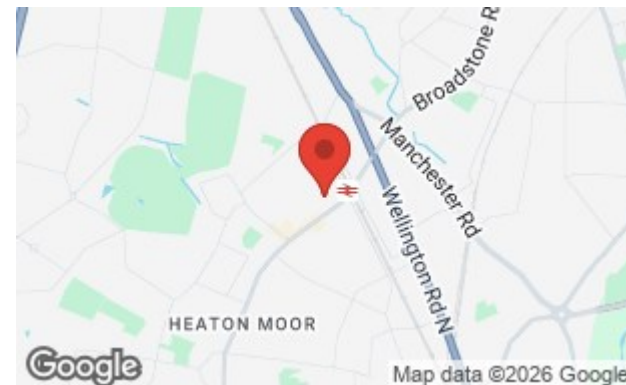
The development is known as Heritage Gardens and enjoys a great location towards the top end of Heaton Moor Road, within easy reach of an excellent range of bars, shops and restaurants. Transport links are also excellent, with regular bus routes on the road itself and Heaton Chapel Rail Station within a short stroll.

The living space is arranged over the ground & lower ground floors, with a spacious open plan living/kitchen fitted with a range of units and walk-in bay window, two good sized double bedrooms, the main with an en-suite bathroom and a further main bathroom.

Outside, there are well tended communal gardens and grounds, in addition to a gated residents car park at the rear.

Directions

SK4 4NU



- Attractive period conversion
- Living space over two floors
- Two double bedrooms
- Two bathrooms
- Spacious open plan living/kitchen
- Fitted with a range of units
- Well tended gardens
- Gated allocated parking
- Excellent location in Heaton Moor
- No onward chain

Postcode - SK4 4NU

EPC Rating - D

Floor Area - 762.00 sq ft

Local Authority - SMBC

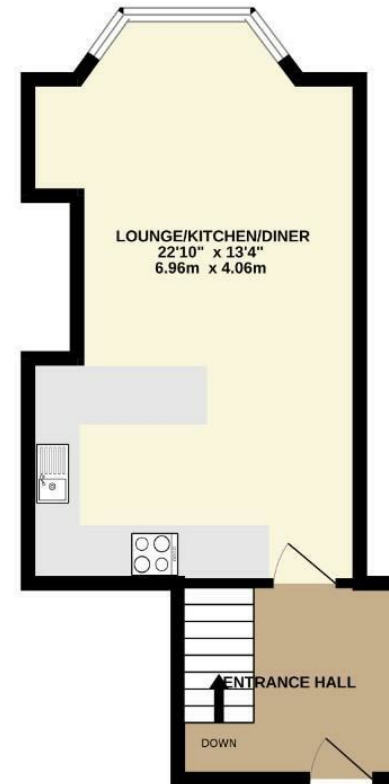
Council Tax - D



BASEMENT
412 sq.ft. (38.3 sq.m.) approx.



GROUND FLOOR
345 sq.ft. (32.1 sq.m.) approx.



TOTAL FLOOR AREA: 758 sq.ft. (70.4 sq.m.) approx.
Measurements are approximate. Not to scale. Illustrative purposes only.
Made with Metropix 62025



These particulars are believed to be accurate but they are not guaranteed and do not form a contract. Neither Jordan Fishwick nor the vendor or lessor accept any responsibility in respect of these particulars, which are not intended to be statements or representations of fact and any intending purchaser or lessee must satisfy himself by inspection or otherwise as to the correctness of each of the statements contained in these particulars. Any floorplans on this brochure are for illustrative purposes only and are not necessarily to scale.

Offices also at: Wilmslow, Macclesfield, Hale, Sale, Chorlton, Glossop, Manchester & Salford

757-759 Wilmslow Road, Didsbury Village, Manchester

0161 445 4480

didsbury@jordanfishwick.co.uk
www.jordanfishwick.co.uk